

Headteacher

John Galvin

Petworth CofE Primary School

South Grove, Petworth,
West Sussex, GU28 0EE

Tel: 01798 342369

Fax: 01798 343195

E-mail: office@petworth.w-sussex.sch.uk

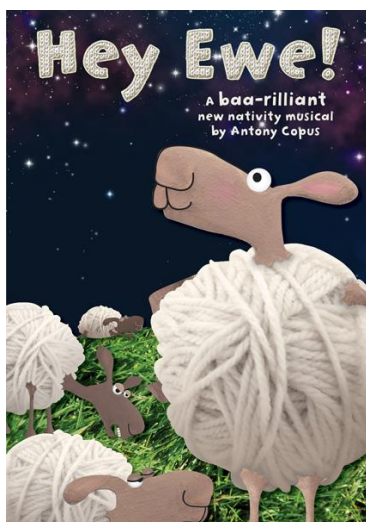
Website: www.petworth.w-sussex.sch.uk



28th November 2018

Dear Parents/Carers,

Early Years and Key Stage One Christmas Celebration "Hey Ewe"



The Early Years and Key Stage One Christmas Celebrations will be held on the **afternoon of Wednesday 12th and the evening of Thursday 13th December.**

In order to accommodate everyone we are holding two performances again this year. **Tickets will be limited to a TOTAL OF THREE PER FAMILY and will be free this year, there will be no admission to the performance without a ticket (these can be split between the difference performances if you prefer).** If you would like a ticket or tickets please complete the attached slip and return it to the school office **as soon as possible** so that tickets can be allocated fairly on a first come basis.

For the **evening performance on Thursday 13th**, please could we ask that **all children come back to school at 5.10pm to change ready for the 5:30pm start.** The children will return to their classroom at the end of the performance where they may be collected from approximately 6.20pm.

The children in Key Stage Two will have an opportunity to watch the dress rehearsal.

Due to the limited ticket numbers for both performances this year, we will be holding a crèche for any children in Key Stage Two on the evening performance on Thursday 13th December. If you would like your Key Stage Two child to attend the crèche whilst you attend the evening performance, please complete and return the attached reply slip.

Could you please sign and return the attached slip as soon as possible.

Yours sincerely

John Galvin
Headteacher

Please return to the School Office ASAP

MAXIMUM THREE TICKETS AVAILABLE PER FAMILY IN TOTAL
(These can be split between performances if you prefer)

Please circle number of tickets required

Wednesday 12th December 1.30pm 1 ticket / 2 tickets / 3 tickets

Thursday 13th December 5:30pm 1 ticket / 2 tickets / 3 tickets

Name(s) of Child/ren.....

I confirm that I will bring my child/ren

.....

.....

back to school at 5.10pm on Thursday 13th December for the evening performance of 'Hey Ewe'.

I will collect my child/ren at 6.20pm after the performance.

I would like my Key Stage Two child/ren

.....

.....

to attend the crèche for the evening performance on Thursday 13th December whilst I attend the performance.

Signed.....

Name.....